

**UNLEASH
THE INFINITE
POSSIBILITIES
WALL TILES**



300x600mm
**GLOSSY
FINISH**

DC SERIES



INTRO DUCING

Welcome to the new world of DIGITAL CERAMIC Wall, Floor & Vitrified Tiles from the SILVENTA. The characteristic of any product tiles is implied by its marvelous craftsmanship and chic visual appeal. At SILVENTA, achieve excellent aesthetic designs in amalgamation with advanced DIGITAL Printing Technology. With this advanced technique, CERAMIC Tiles can now be made virtually with any type of photo-quality image or design on a plain or textured surface of your choice.

Moreover, the germ-free technology in this Tile lends an eco-friendly aspect to your space. SILVENTA CERAMIC comes with a complete innovative DIGITAL Tiles collection that is, MARBLE, ELEVATION, etc. Specially designed & imported from Italy and Spain, to deliver the real zest of Italian marble and elevation stones in India that will be available in the market in sizes 300x600mm, 300x450mm & more.

SILVENTA DIGITAL Tiles are now available on display at any of our business partner exhibit centers.

BEAUTY
OF TILES

ARTISTIC



TECHNICAL FEATURES



**EASY TO
CLEAN**



**STAIN
RESISTANT**



**SCRATCH
RESISTANT**



**EASY TO
MAINTAIN**



UV RESISTANT



WATERPROOF



**RESISTANT
TO CHEMICALS**



**RESISTANT
TO ACIDS**



**FROST
RESISTANT**



**ANTI-
MICROBIAL**



**HEAT
RESISTANT**



**FIRE
RESISTANT**



NON-SLIP



**DIMENSIONAL
STABILITY**



ECOLOGICAL

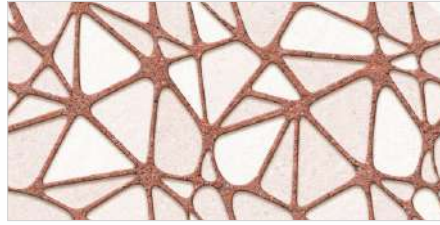


**3D
EFFECT**





DC 3301 LT



DC 3301 HL 1



DC 3301 DK



DC 3301 HL 2



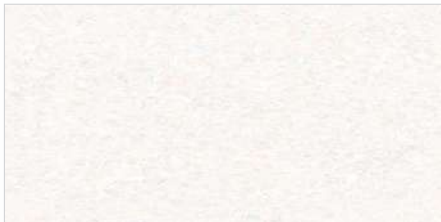
DC 3301 FL

WALL TILE

300x600mm

GLOSSY - FINISH
DC - SERIES

www.silventacermic.com



DC 3302 LT



DC 3302 HL 1



DC 3302 DK



DC 3302 HL 2



DC 3302 FL



DC 3303 LT



DC 3303 HL 1



DC 3303 DK



DC 3303 HL 2



DC 3303 FL

WALL TILE

300x600mm

GLOSSY - FINISH
DC - SERIES

www.silventaceraamic.com



DC 3304 LT



DC 3304 HL 1



DC 3304 DK



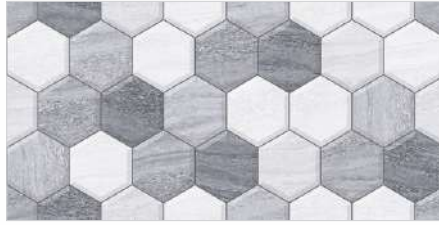
DC 3304 HL 2



DC 3304 FL



DC 3305 LT



DC 3305 HL 1



DC 3305 DK



DC 3305 HL 2



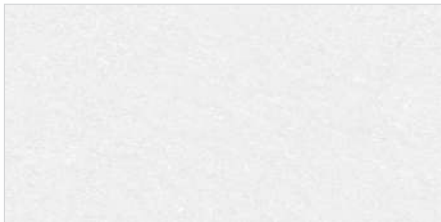
DC 3305 FL

WALL TILE

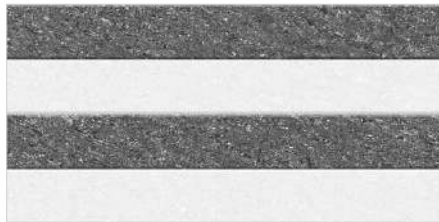
300x600mm

GLOSSY - FINISH
DC - SERIES

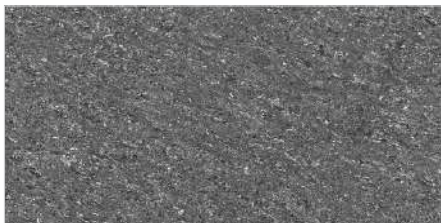
www.silventaceraamic.com



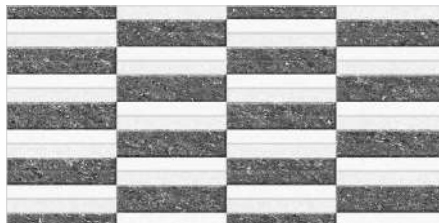
DC 3306 LT



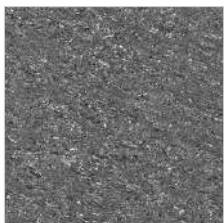
DC 3306 HL 1



DC 3306 DK



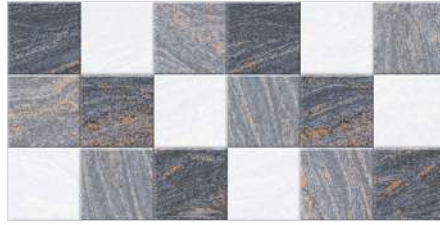
DC 3306 HL 2



DC 3306 FL



DC 3307 LT



DC 3307 HL 1



DC 3307 DK



DC 3307 HL 2



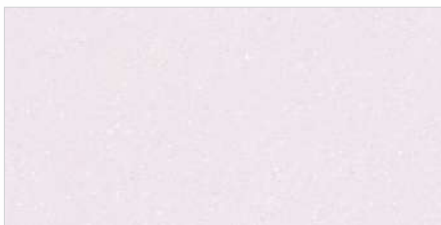
DC 3307 FL

WALL TILE

300x600mm

GLOSSY - FINISH
DC - SERIES

www.silventaceraamic.com



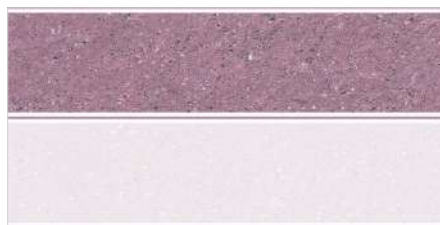
DC 3308 LT



DC 3308 HL 1



DC 3308 DK



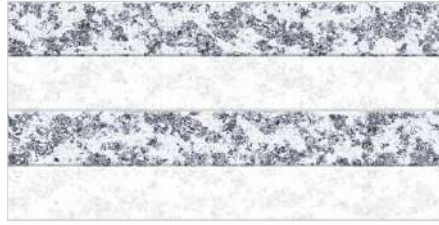
DC 3308 HL 2



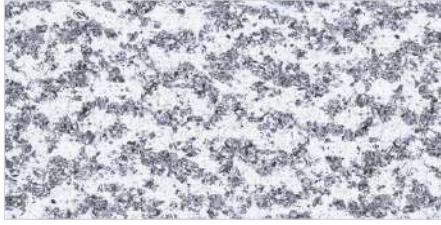
DC 3308 FL



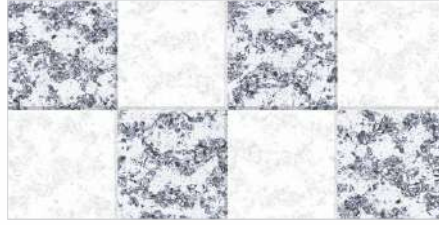
DC 3309 LT



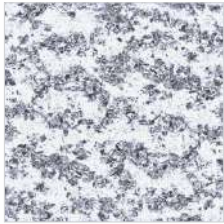
DC 3309 HL 1



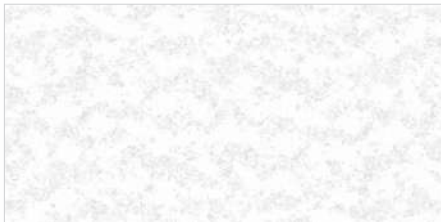
DC 3309 DK



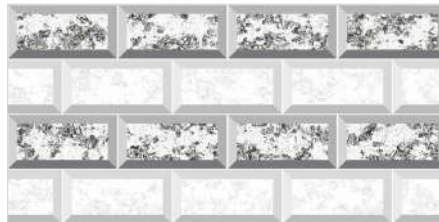
DC 3309 HL 2



DC 3309 FL



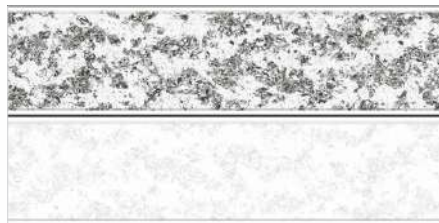
DC 3310 LT



DC 3310 HL 1



DC 3310 DK



DC 3310 HL 2



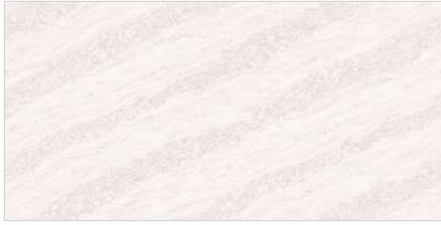
DC 3310 FL

WALL TILE

300x600mm

GLOSSY - FINISH
DC - SERIES

www.silventaceraamic.com



DC 3311 LT



DC 3311 HL 1



DC 3311 DK



DC 3311 HL 2



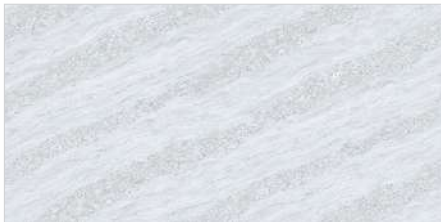
DC 3311 FL

WALL TILE

300x600mm

GLOSSY - FINISH
DC - SERIES

www.silventaceraamic.com



DC 3312 LT



DC 3312 HL 1



DC 3312 DK



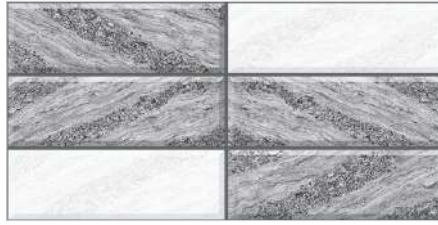
DC 3312 HL 2



DC 3312 FL



DC 3313 LT



DC 3313 HL 1



DC 3313 DK



DC 3313 HL 2



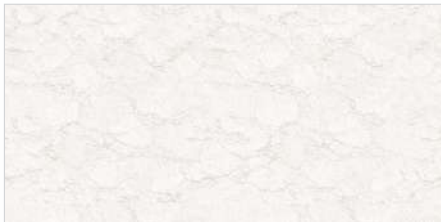
DC 3313 FL

WALL TILE

300x600mm

GLOSSY - FINISH
DC - SERIES

www.silventaceraamic.com



DC 3314 LT



DC 3314 HL 1



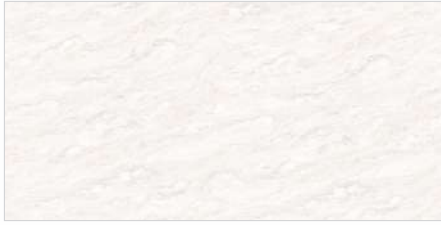
DC 3314 DK



DC 3314 HL 2



DC 3314 FL



DC 3315 LT



DC 3315 HL 1



DC 3315 DK



DC 3315 HL 2



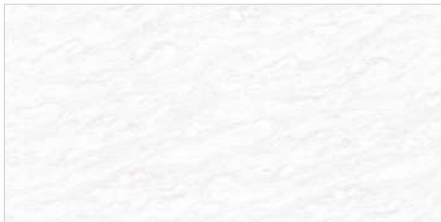
DC 3315 FL

WALL TILE

300x600mm

GLOSSY - FINISH
DC - SERIES

www.silventaceraamic.com



DC 3316 LT



DC 3316 HL 1



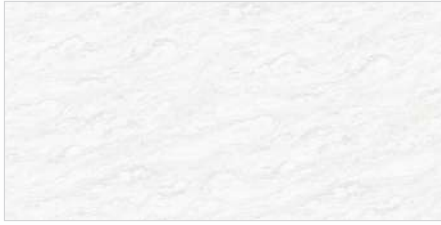
DC 3316 DK



DC 3316 HL 2



DC 3316 FL



DC 3317 LT



DC 3317 HL 1



DC 3317 DK



DC 3317 HL 2



DC 3317 FL

WALL TILE

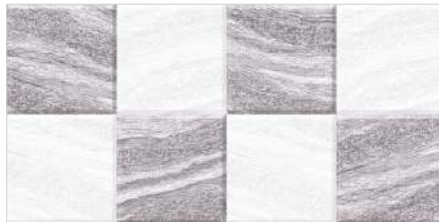
300x600mm

GLOSSY - FINISH
DC - SERIES

www.silventaceraamic.com



DC 3318 LT



DC 3318 HL 1



DC 3318 DK



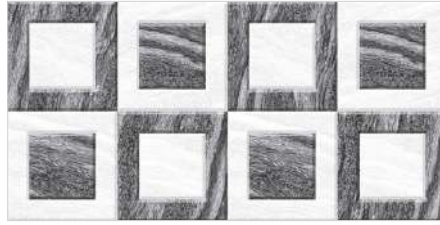
DC 3318 HL 2



DC 3318 FL



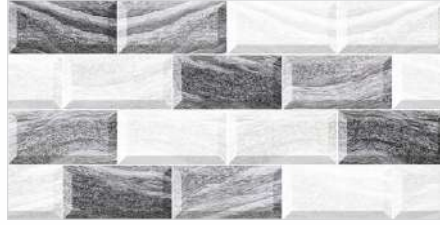
DC 3319 LT



DC 3319 HL 1



DC 3319 DK



DC 3319 HL 2



DC 3319 FL

WALL TILE

300x600mm

GLOSSY - FINISH
DC - SERIES

www.silventaceraamic.com



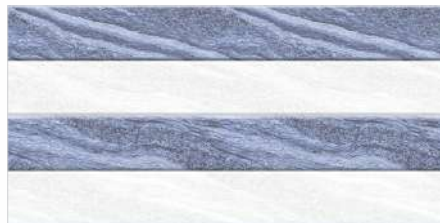
DC 3320 LT



DC 3320 HL 1



DC 3320 DK



DC 3320 HL 2



DC 3320 FL



DC 3321 LT



DC 3321 HL 1



DC 3321 DK



DC 3321 HL 2



DC 3321 FL

WALL TILE

300x600mm

GLOSSY - FINISH
DC - SERIES

www.silventaceraamic.com

TECHNICAL SPECIFICATION

Characteristics	Euro Standards EN - 159 / IS 13753	SILVENTA VALUE
-----------------	---------------------------------------	-------------------

DIMENSION & SURFACE QUALITY

Dimension	± 0.5%	± 0.2%
Deviation in Thickness	± 0.6 mm	± 0.2 mm
Straightness of sides	± 0.3%	± 0.2%
Rectangularity	± 0.5%	± 0.3%
Surface Flatness	± 0.5%	± 0.3%
Surface Quality	Min. 95%	Min. 96%

PHYSICAL PROPERTIES

Water Absorption	> 10%	13.5%
Bending Strength	> 150 kg/cm ²	200 - 250 kg/cm ²
Scratch hardness (Mohs)	Min. 3	Min. 3
Crazing	1 Cycle	No Crazing at 5 Cycles

CHEMICAL PROPERTIES

Staining Resistance	Min. Class 2	Resistance to all Acids And Alkalies & Household Chemicals, except Hydro Flouric Acid
Household Chemical	Min. Class B	

THERMAL PROPERTIES

Thermal Shock	Resistant to 10 Cycles	CONFORMS
Thermal Expansion	Max. 9E -06	CONFORMS

Our Conformity to the above standard is applicable only for premium quality

PACKING DETAIL

Size	Thickness (Approx.)	Tiles Per Box	Coverage Area Per Box	Wt. of Box (Approx.)
300x600mm	8.7 mm	5 pcs.	0.90 sq. mtr.	14 kg.
300x300mm(Floor)	8 mm	8 pcs.	0.72 sq. mtr.	9.5 kg.



Silventa Ceramic Tiles Pvt. Ltd.

Jetpar Road, Near Narmada Canal, Survey No. 464,
At. Jasmagadh, Dist. Morbi. (Guj.) INDIA

m: +91 99789 40455, +91 90990 10311
e : info@silventaceraic.com
w : www.silventaceraic.com